

OPERATION MANUAL

kiro air

CO2 traffic light with integrated humidity and temperature measurement

Description



Technical data

CO2 measurement	
Measuring range	400...2000 ppm
Measurement method	VOC, Calculation of the CO2 equivalent
Temperature measurement	
Measuring range	0...+50 °C
Accuracy	±0,2 °C
Humidity measurement	
Measuring range	0...100 % RH
Accuracy	±2 % RH
Power supply	
Operating voltage	5 V DC, max. 30 mA, connection via Micro-USB (operation only with power adapter included in assembly.)
Function check	During power up the traffic light flashes red for 30 minutes
Paper-white display	
Dimensions	1,54", 200 x 200 pixels
Display	CO2 concentration, temperature, rel. humidity
Additional function	Heartbeat function
Traffic light	
Red, flashes	Calibration phase of 30 minutes until the measured values are stable
Green	CO2 concentration up to 800 ppm
Yellow	CO2 concentration 800 to 1000 ppm
Red	CO2 concentration more than 1000 ppm
Other data	
Alarm signale	Active at CO2 concentrations above 1000 ppm
Casing	ABS
Protection class	IP30
Dimensions	78 x 122 x 27 mm (W x H x D)
Scope of delivery	kiro air, power adapter, operation manual, stand-up display

Performance characteristics

- Measured variables: CO2 concentration (VOC measurement method, display of the CO2 equivalent), temperature, humidity
- Display: Paper-white display with heartbeat function and LED traffic light
- Alarm: Acoustic signal when the CO2 concentration exceeds 1000 ppm (Acoustic signal can be switched off)
- Operating temperature: 0...+50 °C
- Ambient humidity: 0...85 % RH
- Operating voltage: 5 V DC, micro USB port
- Protection class IP30
- Wall mounting

Application areas

- Living rooms
- Work and office spaces
- Schools, classrooms
- Seminar rooms
- Lounges
- Other closed rooms with a large number of people

Function description

The device requires a permanent connection to a power supply unit for operation. After the device is connected to the power supply unit, 30-minutes of calibration phase begins. During this time the LED traffic light flashes red.

Afterwards kiro air is in operational mode and shows the CO2 concentration, temperature and relative humidity on the display. Flashing of the measurement symbols indicates normal operation (heartbeat function).

The LED traffic light changes color according to the measured CO2 concentration:

- Green: CO2 concentration up to 800 ppm
- Yellow: CO2 concentration 800 to 1000 ppm
- Red: CO2 concentration above 1000 ppm

Article numbers

kiro air incl. power adapter and stand-up display	0560 9015
Power adapter	0554 0452



OPERATION MANUAL

kiro air

CO2 traffic light with integrated humidity and temperature measurement

Signal tone

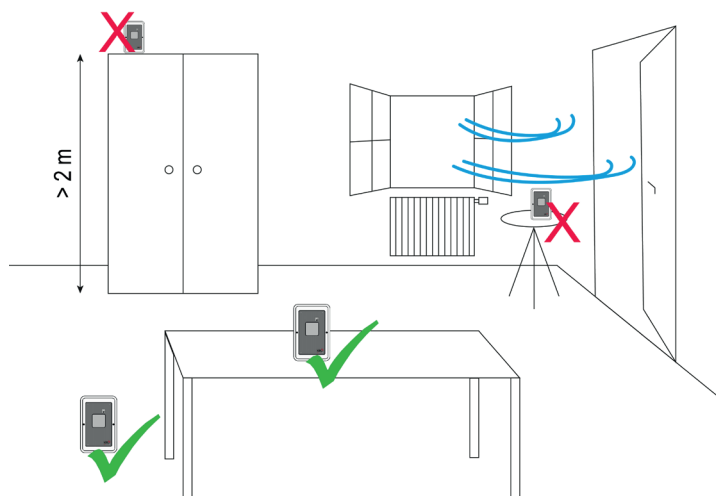
If CO₂-concentration exceeds 1000 ppm, a signal tone is emitted for 5 seconds. This advises the user to ventilate the room. In case the CO₂-concentration stays permanently above 1000 ppm, after three minutes the signal tone will be emitted second time.

This function can be disabled if necessary. This is done by pressing a switch for one second with a pointed object on the side of the device (refer to drawing) and is indicated with a 2 second delay by a crossed-out signal symbol on the display. After power up the signal tone is active by default.



Positioning

The kiro air is only suitable for use in closed rooms. Avoid strong temperature and humidity fluctuations. The maximum installation height above the floor is 2 meters, ideally at table height. A minimum distance of 2 meters must be kept to windows and radiators.



Wall mounting

